

Rivestimenti

textiles and leathers

revêtements

Bezüge

tejidos

- **Colori, tessuti e pelli fotografati sono indicativi**
- **Colours, fabrics and leathers photographed are indicative**

Krizia

Colori policarbonato - Polycarbonate colours



B

Bianco
White
Blanc
Weiss
Blanco



R

Rosso
Red
Rouge
Rot
Rojo



T

Trasparente
Transparent
Transparente



M

Moka

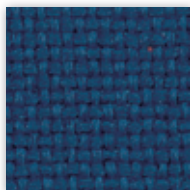


N

Nero
Black
Noir
Schwartz
Negro

B

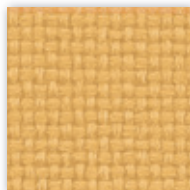
Tessuto altamente ignifugo
Certificato Classe 1 Ministero dell'Interno
Fireproof fabric - Tissu non feu
Brandfester Bezug - Tela ignifuga
100% Poliolefina
(Martindale 60.000)



B 255



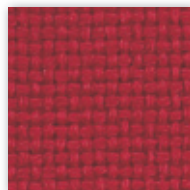
B 256



B 257



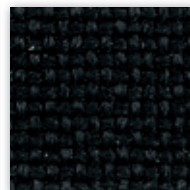
B 259



B 253



B 250



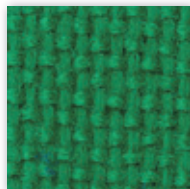
B 254



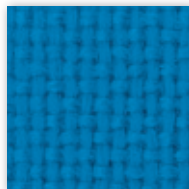
B 258



B 251



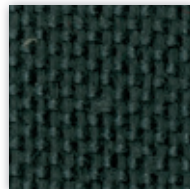
B 262



B 260



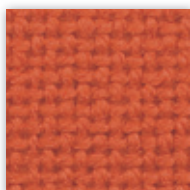
B 252



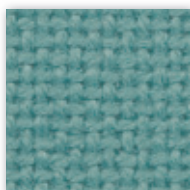
B 261

C

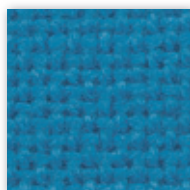
TREVI Tessuto altamente ignifugo
Certificato Classe 1 Ministero dell'Interno
Fireproof fabric - Tissu non feu
Brandfester Bezug - Tela ignifuga
100% Poliestere Trevira CS
(Martindale 120.000)



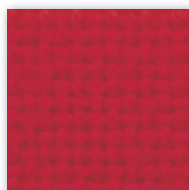
C 323



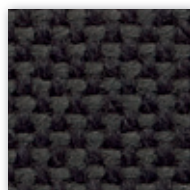
C 321



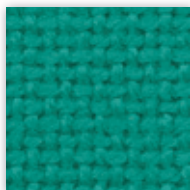
C 314



C 300



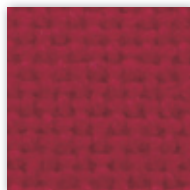
C 311



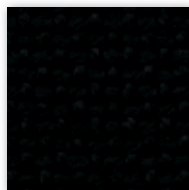
C 306



C 319



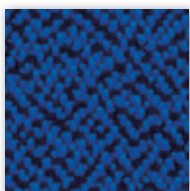
C 316



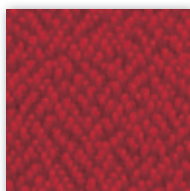
C 310

C

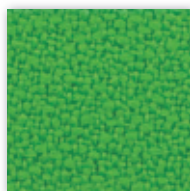
Tessuto altamente ignifugo
Certificato Classe 1 Ministero dell'Interno
Fireproof fabric - Tissu non feu
Brandfester Bezug - Tela ignifuga
100% Poliestere Trevira CS
(Martindale 100.000)



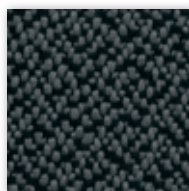
C 360



C 361



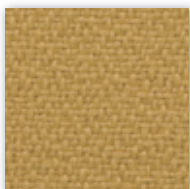
C 359



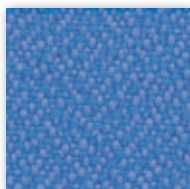
C 363



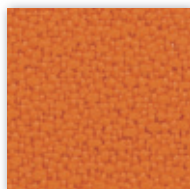
C 364



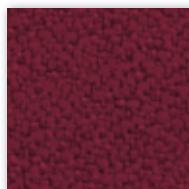
C 366



C 367



C 368



C 369

C

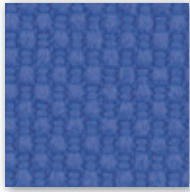
TREVI Tessuto altamente ignifugo
Certificato Classe 1 Ministero dell'Interno
Fireproof fabric - Tissu non feu
Brandfester Bezug - Tela ignifuga
100% Poliestere Trevira CS
(Martindale)



C 381



C 380



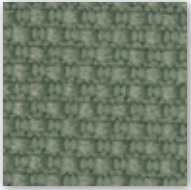
C 383



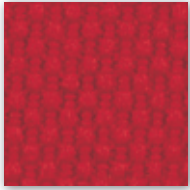
C 38 G



C 38 L



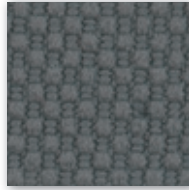
C 38 M



C 382



C 387



C 384



C 385



C 386



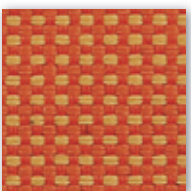
C 38



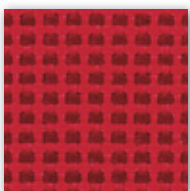
C 388

C

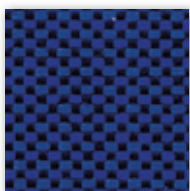
Tessuto altamente ignifugo
Certificato Classe 1 Ministero dell'Interno
Fireproof fabric - Tissu non feu
Brandfester Bezug - Tela ignifuga
100% Poliestere Trevira CS
(Martindale 55.000)



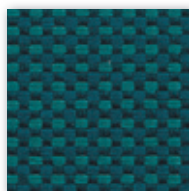
C 395



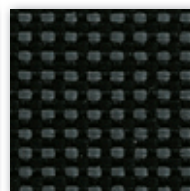
C 396



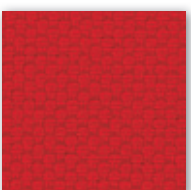
C 397



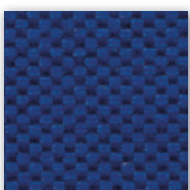
C 398



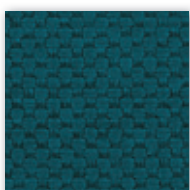
C 399



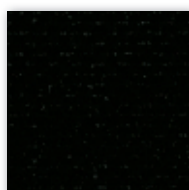
C 390



C 391



C 392



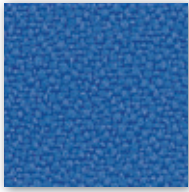
C 393

C

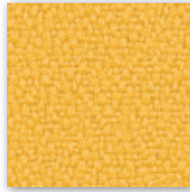
Tessuto altamente ignifugo
Certificato Classe 1 Ministero dell'Interno
Fireproof fabric - Tissu non feu
Brandfester Bezug - Tela ignifuga
100% Xtreme FR®
(Martindale 100.000)



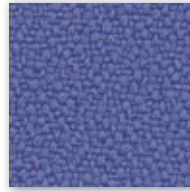
C 335



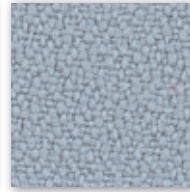
C 338



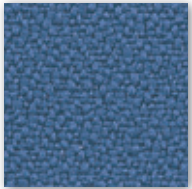
C 336



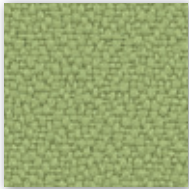
C 339



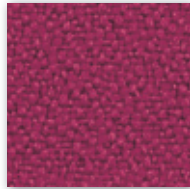
C 349



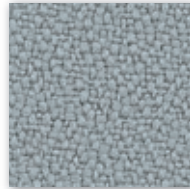
C 325



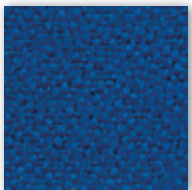
C 332



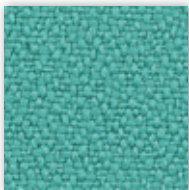
C 337



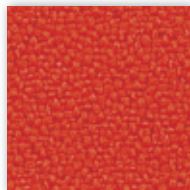
C 331



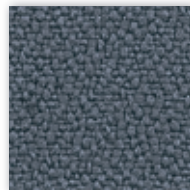
C 326



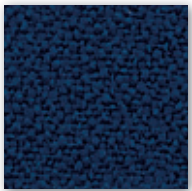
C 333



C 334



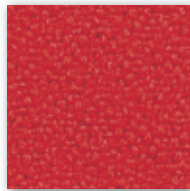
C 324



C 330



C 327



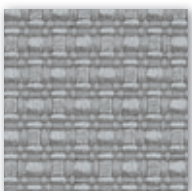
C 329



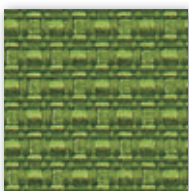
C 328

D

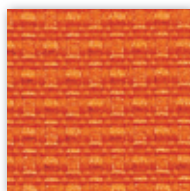
Tessuto altamente ignifugo
Certificato Classe 1 Ministero dell'Interno
Fireproof fabric - Tissu non feu
Brandfester Bezug - Tela ignifuga
100% Poliestere Trevira CS
(Martindale 110.000)



D 440



D 441



D 442



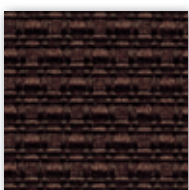
D 443



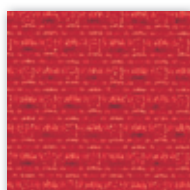
D 444



D 445



D 446



D 447



D 448